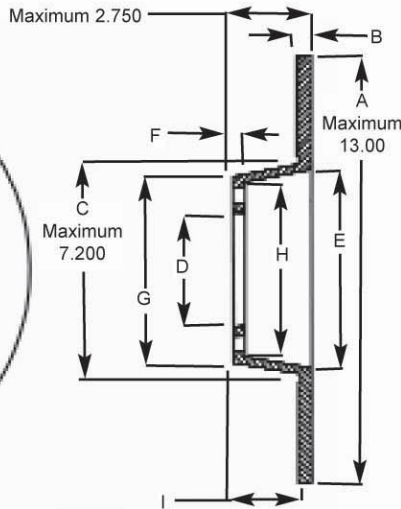
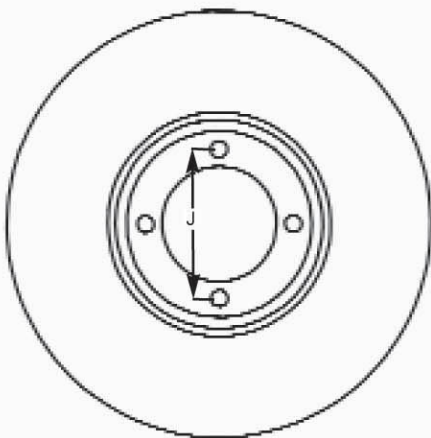


COLEMAN INTEGRAL HAT AND ROTOR



One piece hat and rotors are made to your specifications. Castings are designed to cover a broad range of applications. The disc can be machined to .600 max with a diameter of 13". If your disc requires sizes other than those shown as in step or counter bore etc. please provide a blueprint or sample.

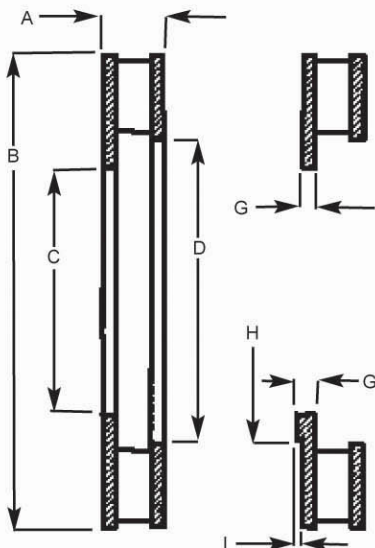
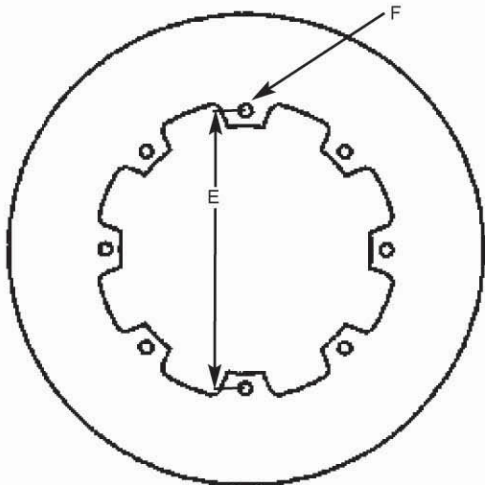
- A= _____ (Max 13")
- B= _____ (Max .600)
- C= _____ (Max 7.200)
- D= _____
- E= _____
- F= _____
- G= _____
- H= _____
- I= _____
- J=Bolt Circle _____
- Hole Size _____
- No. Of Holes _____

Approved By: _____
Date: _____

PART NO.	DESCRIPTION	RACER
500-HAT	Integral Hat / Rotor.....	\$ 182.35

COLEMAN BRAKE ROTOR SPEC SHEET

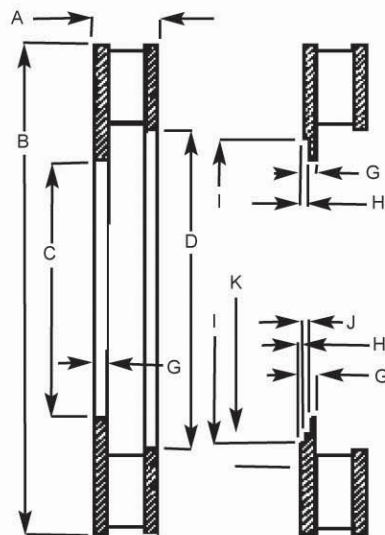
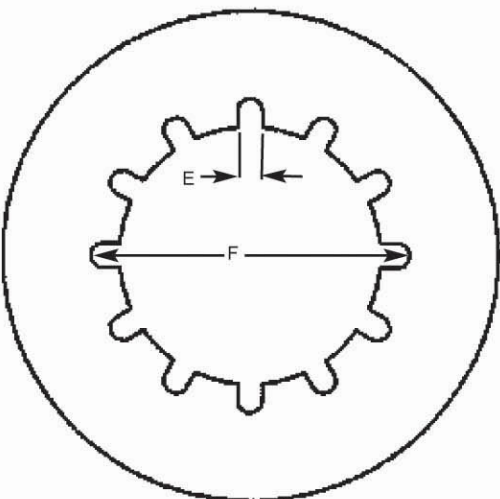
SOLID MOUNT ROTOR



- A= _____ Thickness
- B= _____ Diameter
- C= _____ Flange Diameter
- D= _____ Eye Diameter
- E= _____ Bolt Circle
- F= _____ Size Of Bolt Holes
- F= _____ No. Of Bolt Holes
- G= _____ Flange Thickness
- H= _____ Step Diameter
- I= _____ Step Depth

Approved By: _____
Date: _____

FLOATING MOUNT ROTOR



- A= _____ Thickness
- B= _____ Diameter
- C= _____ Flange Diameter
- D= _____ Eye Diameter
- E= _____ Slot Width
- E= _____ No. of Slots
- F= _____ Slot Tip to Tip
- G= _____ Flange Thickness
- H= _____ Step Diameter
- I= _____ Step Depth
- J= _____ Step Depth
- K= _____ Step Diameter

Approved By: _____
Date: _____

NOTE: All custom rotors must have spec sheet, blueprint or sample part. We can not make custom rotors with dimensions supplied over the phone. All spec sheets must be signed and dated by the purchaser or person supplying the sizes. Coleman Machine, Inc. is not responsible for any failure of custom rotors due to improper fit, improper tolerances or any problems encountered with the sizes or design of the finished part when machined to the customers specifications.