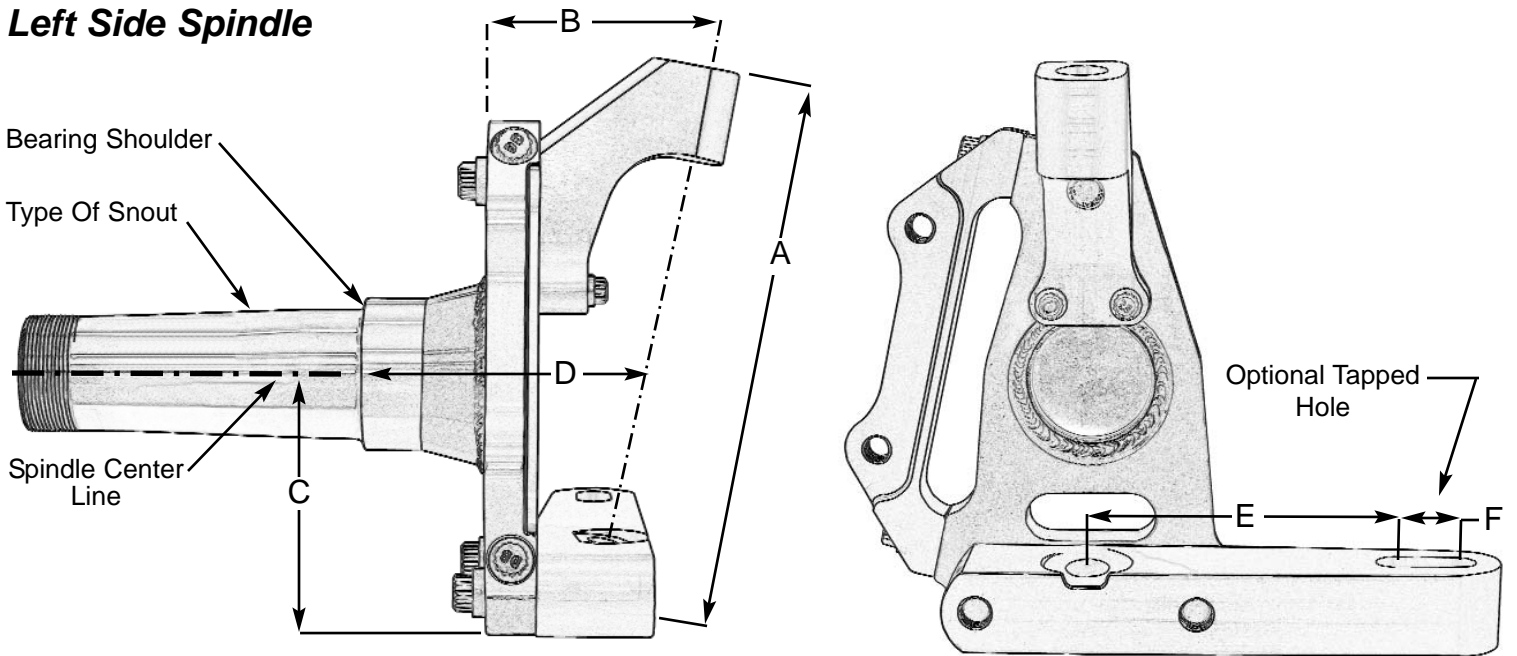


Custom Spindle Sizes

Left Side Spindle



A=Spindle Height From Bottom Of Steering Arm To Top Of Ball Joint Eye _____

B=Inclenation Angle _____

C=Pin Height From Bottom of Steering Arm _____

D=Track Width From Bearing Shoulder To Ball Joint Center Line _____

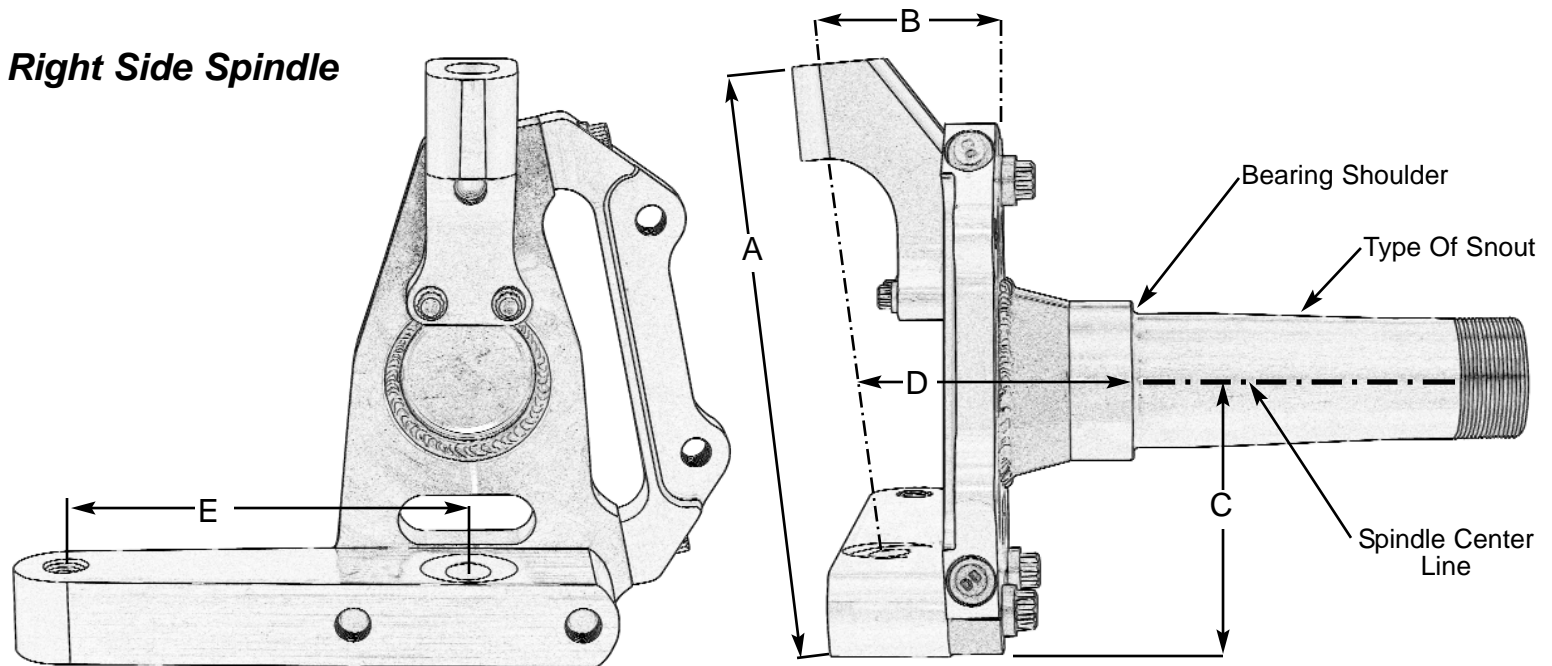
E=Steering Arm Length From Ball Joint Center _____

F=Slot Length _____ Optional Tapped Hole _____

Type Of Snout _____

Notes: _____

Right Side Spindle



A=Spindle Height From Bottom Of Steering Arm To Top Of Ball Joint Eye _____

B=Inclenation Angle _____

C=Pin Height From Bottom of Steering Arm _____

D=Track Width From Bearing Shoulder To Ball Joint Center Line _____

E=Steering Arm Length From Ball Joint Center _____

Type Of Snout _____

Notes: _____

NOTE: Double check all sizes. Coleman Machine is not responsible for mistakes in measurements provided to them. Once a custom spindle is made there is no returns or refunds.

Signed: _____ Date: _____