

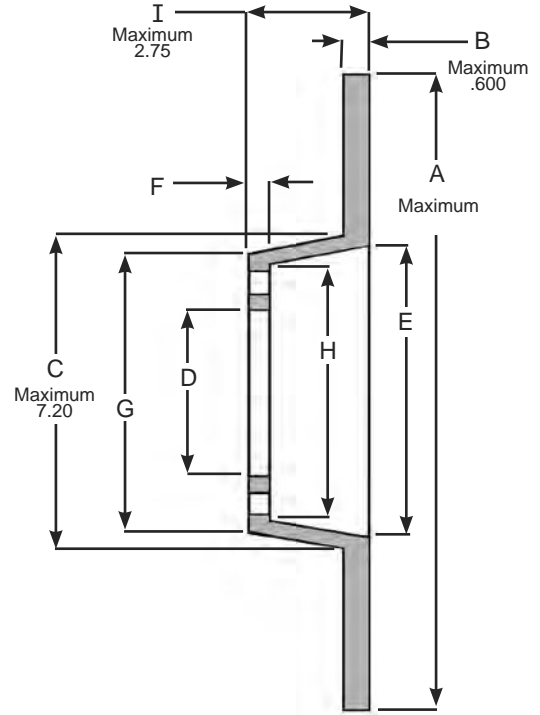
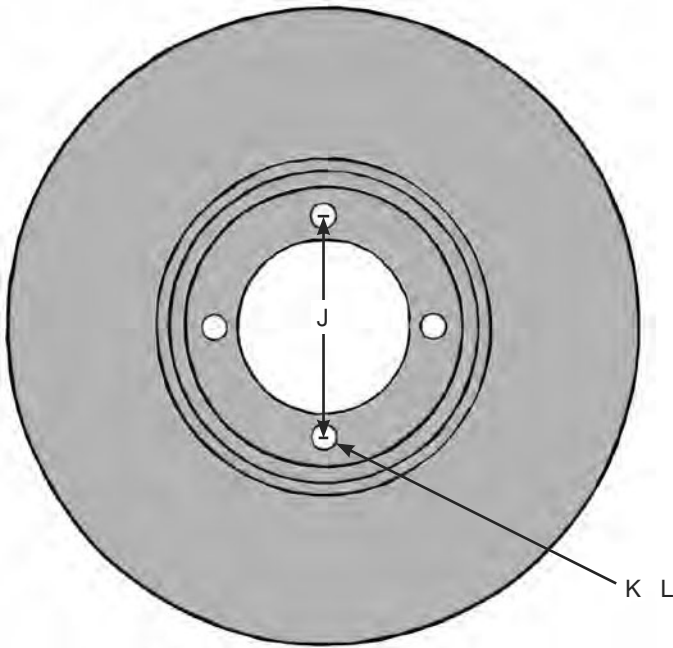


Integral Hat and Rotor

This one piece hat and rotor is made to your specs. Ideal for vintage cars, custom applications and others. The castings are designed to cover a broad range of sizes, with a maximum disc thickness of .600, 13" diameter and a 2.750 overall length. Please fill out the set up sheet below, or provide a sample or blueprint.

PART NO. DESCRIPTION
500-Hat Integral Hat and Rotor

Integral Hat and Rotor Set-Up Sheet



NO METRIC SIZES

- "A" (Diameter) _____ (13" Maximum)
- "B" (Disc Thickness) _____ (.600 Maximum)
- "C" (Hat Large Diameter) _____ (7.200 Maximum)
- "D" (Center Bore) _____
- "E" (Large Bore) _____
- "F" (Face Thickness) _____
- "G" (Hat Small Diameter) _____
- "H" (Small Bore) _____
- "I" (Overall Length) _____ (2.750 Maximum)
- "J" (Bolt Circle) _____
- "K" (No. Of Holes) _____
- "L" (Size Of Holes) _____

NOTES: _____

NOTE: All Tolerances Are +/- .005 Unless Otherwise Specified By The Customer.

Approved By: _____

Date: _____

All custom rotors require filling out our custom rotor set-up sheet, a sample or blueprint. We cannot build any custom rotors with dimensions supplied over the phone. Coleman Machine, Inc. is not responsible for any failure of custom rotors due to improper fit, tolerances or issues encountered with the sizes or design of the finished part machined to customers specifications.